

# iDecking

REVOLUTION



main catalogue



**iDecking Revolution** is brought to you by an Italian company established to innovate in the field of outdoor decking and wall claddings. A team made of the best experts has carried out years of research and development with some of the world's most important architects, designers and qualified deck builders. This research has given iDecking the opportunity to alleviate all the main issues and problems associated with traditional deck building techniques and materials, starting a true revolution in the decking field all over the world.



**iDecking**  
REVOLUTION

## iDecking Revolution makes all this possible!



Our patented systems **EasyClick** and **EasyChange** simplify and revolutionize all the traditions of installing systems used all over the world.

**DURO 2.0** is the name of the most innovative 100% recyclable material studied to reach the beauty of natural woods while drastically lowering the need of maintenance, being an easy to clean and colour resistant surface.



## Premi Internazionali tecnologia iDecking

Innovations@  
**DOMOTEX**

**THE WORLD OF FLOORING**  
HANNOVER - GERMANY

Winner of the  
**International prize  
for best innovations**



SELECTED INNOVATIONS  
2015, 2016 & 2017



A jury of ten experts from the fields of design, architecture, interior design, the media and the property market assess the products in the respective categories according to specific criteria, including their relevance for the various target groups, technological innovation, design concept and quality.



**GERMAN  
DESIGN  
AWARD  
2017**

## German Design Award 2017



The German Design Award directly contributes to the overall commercial success. Prizes will only be awarded to projects that truly represent pioneering contributions to the German and international design landscape. The highly esteemed, international jury guarantees this. The German Design Award identifies and presents unique design trends: a competition that advances the design-oriented scene.





## iDecking systems advantages:

### NO SCREWS

**iDecking** does not require spacers, nails or screws, unlike traditional fastening systems and techniques, drastically reducing installation time and extending the product's lifespan.

Choosing **iDecking** allows you to enjoy walking on a totally clean, smooth deck surface.

### MORE DURABILITY

Our extremely durable and resilient aluminium rail system and nylon clips provides greater strength and durability unlike the traditional wood substructure which is prone to chipping and rotting.

Systems Warranty: 20 YEARS

### ANTI - STAIN AND COLOUR PERFORMANCE SURFACE

The unique design of **DURO 2.0** is perfectly preserved by its anti-stain and color performance technologies. The anti-stain cap makes the surface extremely easy to clean preventing it from any liquid absorption. The color performance technology brought by **iDecking Revolution** drastically reduces the color fading factor of the surface.

### FASTEST INSTALLATION

Save time! Save money !

**iDecking** systems are designed to speed up deck installation times - in most cases up to 5 times faster!

# DURO

## Co-Extruded, anti-stain decking

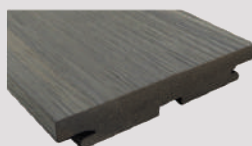
**DURO 2.0** is the highest quality capped composite material developed by **iDecking Revolution** in order to blend the advantages of a classy wooden surface with the technical performances wood cannot guarantee. An ultra protective capsule surrounds the board whose natural part includes a mix of Rice Husks and Bamboo. This has been achieved through our own innovative co-extrusion process technology.

**DURO 2.0** surface looks like real wood. The wood grain is embossed in order to give it the magic feeling of a natural wood brushed board. **DURO 2.0** is 100% recyclable and extremely easy to clean thanks to a 100% non-absorbant surface.

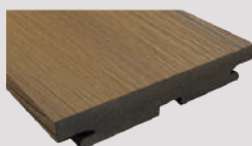
**DURO 2.0** colour keeps its tone over the years, guaranteeing an imperceptible gradient of fade. **DURO 2.0** decking can be installed both on the **EasyClick** and **EasyChange** systems and the boards are available in a choice of five different colours.

## Available colours

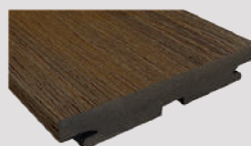
### WOOD GRAIN EFFECT



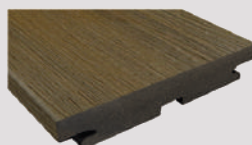
HELMUT



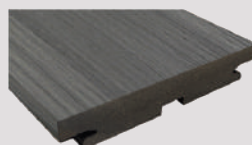
TEAK



TERRA



BURMA



DENIM





HELMUT

TEAK

BURMA

TERRA

DENIM

## Which are the highlights of **DURO 2.0** material?

REAL WOOD LOOKING SURFACE

—

FAT & OIL STAIN RESISTANT

—

MADE OF RICE HUSKS - BAMBOO - RECYCLED PLASTIC

—

EASY TO CLEAN

—

LOW MAINTENANCE

—

NO SPLINTERS, BAREFOOT WALKING IS WELCOME!

—

IMPROVED COLOUR UV RESISTANCE

—

100% RECYCLABLE

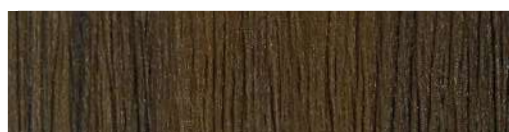


WATCH THE VIDEO

# DURO

for **EasyClick**  
140x22x2180mm  
(5,5 x 0,86 x 85,8 in)

WOOD GRAIN EMOSS



**ALUMINUM UNDERSTRUCTURE**  
26x70 mm (1 x 2,75 in)

# DURO

for **EasyChange**  
140x22x2180mm  
(5,5 x 0,86 x 85,8 in)

WOOD GRAIN EMOSS



**ALUMINUM UNDERSTRUCTURE**  
30x50 mm (1,18 x 1,96 in)









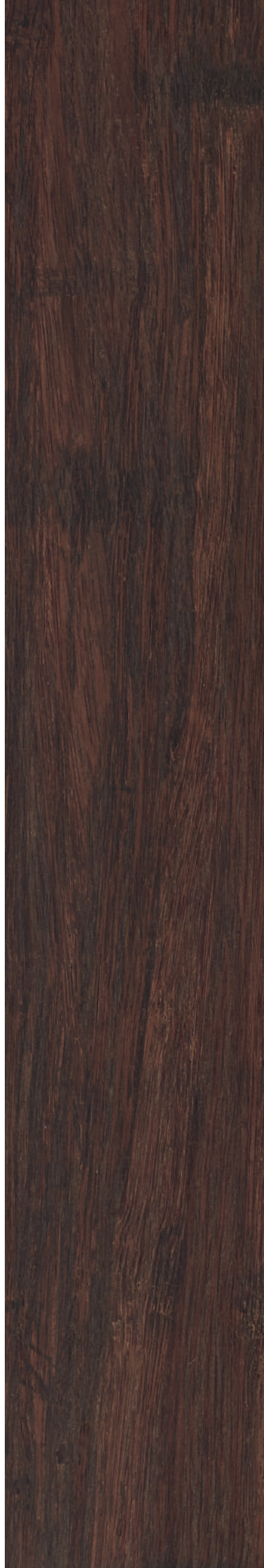


# ETHERNO

## Carbonized Bamboo

As a leading company in the innovation of decking systems and materials, **iDecking Revolution** is caring deeply about developing Green and Eco-Friendly solutions. This has led to the production of **ETHERNO**: the new decking solution made of Bamboo boards (100% bamboo) combined with iDecking Revolution EasyClick and EasyChange systems.

Bamboo grows much faster than any tree and is among the most prolific resources on earth. Through a specialized process of compression and thermo treatment, **ETHERNO** provides strength, stability and durability.





Which are the highlights of  
**ETHERNO** product?

ECO-FRIENDLY BOARDS MADE OF  
THERMO DENSITY BAMBOO

—

INNOVATIVE INSTALLATION

—

EXTREMELY STABLE AND DURABLE

—

WEATHERPROOF & WATERPROOF

—

NATURAL AGING WITH PATINA

—

INSECT AND TERMITE PROOF

—

FIRE RESISTANT: BFL-S1



# ETHERNO

137x20x1870 mm (5,39 x 0,78 in - length: 6,13 ft)

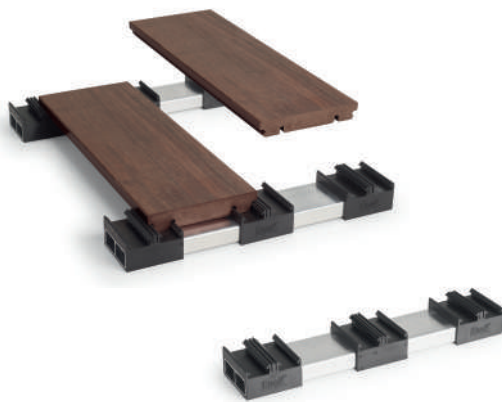
FLAT SURFACE



FLAT SURFACE



**EasyClick**



ALUMINUM UNDERSTRUCTURE  
26x70 mm (1 x 2,75 in)

**EasyChange**



ALUMINUM UNDERSTRUCTURE  
30x50 mm (1,18 x 1,96 in)





# EasyChange System

decking becomes  
removable



**EasyChange** is a unique system that allows you to remove and replace any board individually in any part of the floor or wall using a special **iDecking Key**. No need to use any nails, screws, drills or spacers to fasten the boards on the understructures. Its design allows the self alignment of board joints. The **EasyChange** systems helps ensure a quick, simple and trouble-free installation.



1. TURN THE KEY



2. REMOVE/REPLACE ANY BOARD

## How does **EasyChange** system work?

**EasyChange** is comprised of an aluminium substructure which comes with prespaced special rotating nylon cams. Decking boards are then locked in place with a simple turn of the **EasyKey**.



SCAN THE CODE TO  
WATCH THE VIDEO



## What are the highlights of **EasyChange** system?

REMOVE AND REPLACE ANY DECKING BOARD FROM ANYWHERE IN THE FLOOR OR WALL

—

UP TO 50% FASTER INSTALLATION COMPARED TO TRADITIONAL DECK BUILDING

—

QUICK ACCESS FOR INSPECTION/CLEANING UNDER THE DECK

—

DOESN'T CAUSE WATER STAGNATION UNDER THE DECK

—

INCREASED STRUCTURAL INTEGRITY AND STRENGTH

—

CAN BE USED WITH ANY TYPE OF PAVEMENT

# iFly

the magic hidden clip



**iFly** is the hidden clip that allows you to remove/replace decking boards from anywhere on your deck with the simple turn of a key. iFly can be installed on any kind of substructure like a traditional hidden fastener, but with all the benefits of the celebrated iDecking EasyChange system.



## How does **iFly** clip work?

**iFly** is installed like any traditional decking clip. It is simply screwed onto the chosen rail (which can be wood, composite or metal). The upper part has a special rotating nylon head which allows the decking boards to be locked in place or removed with a simple turn of the **iFly Key**.

**1. TURN THE KEY**

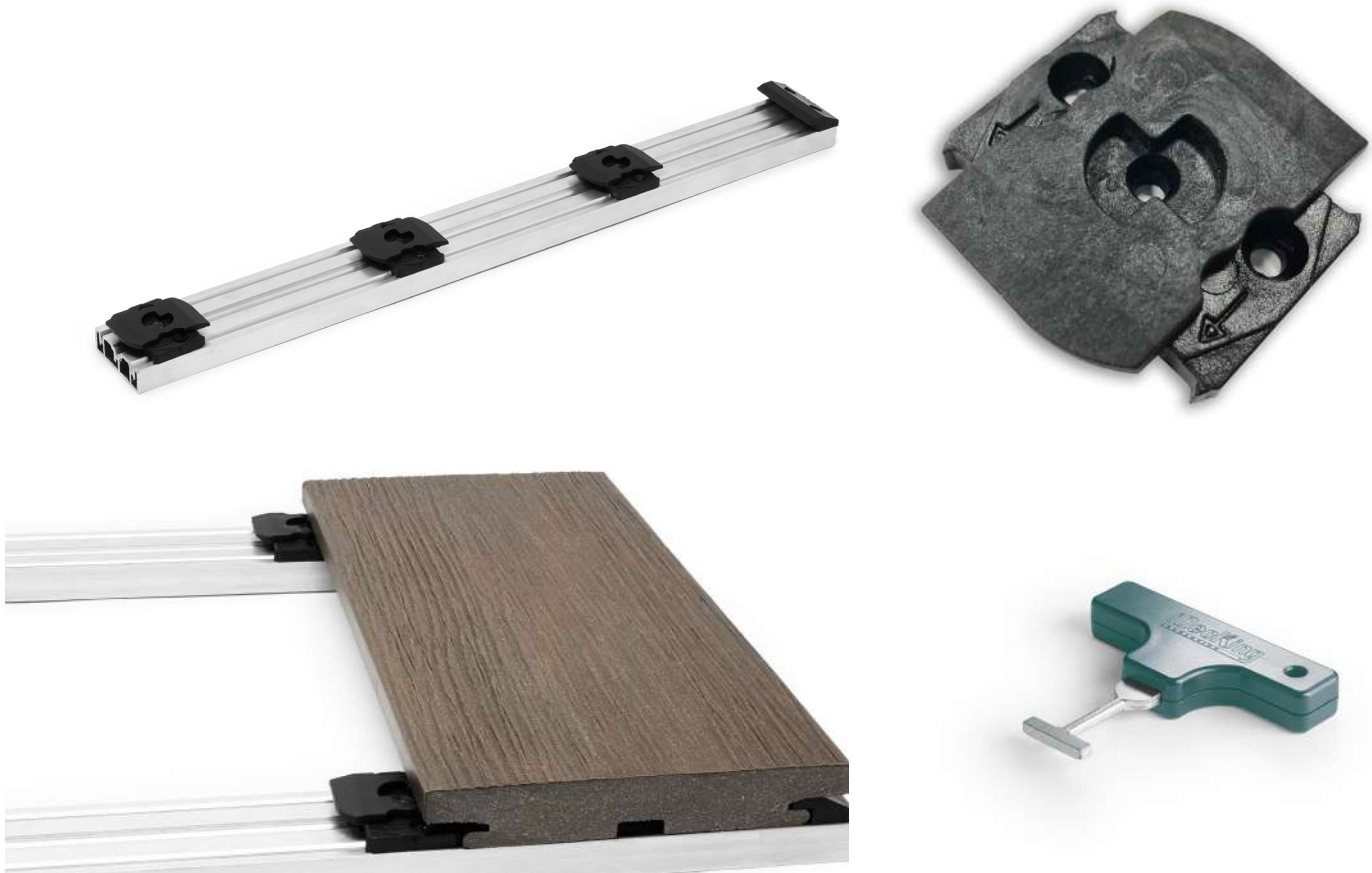


**2. REMOVE / REPLACE ANY BOARD**



SCAN THE CODE TO  
WATCH THE VIDEO





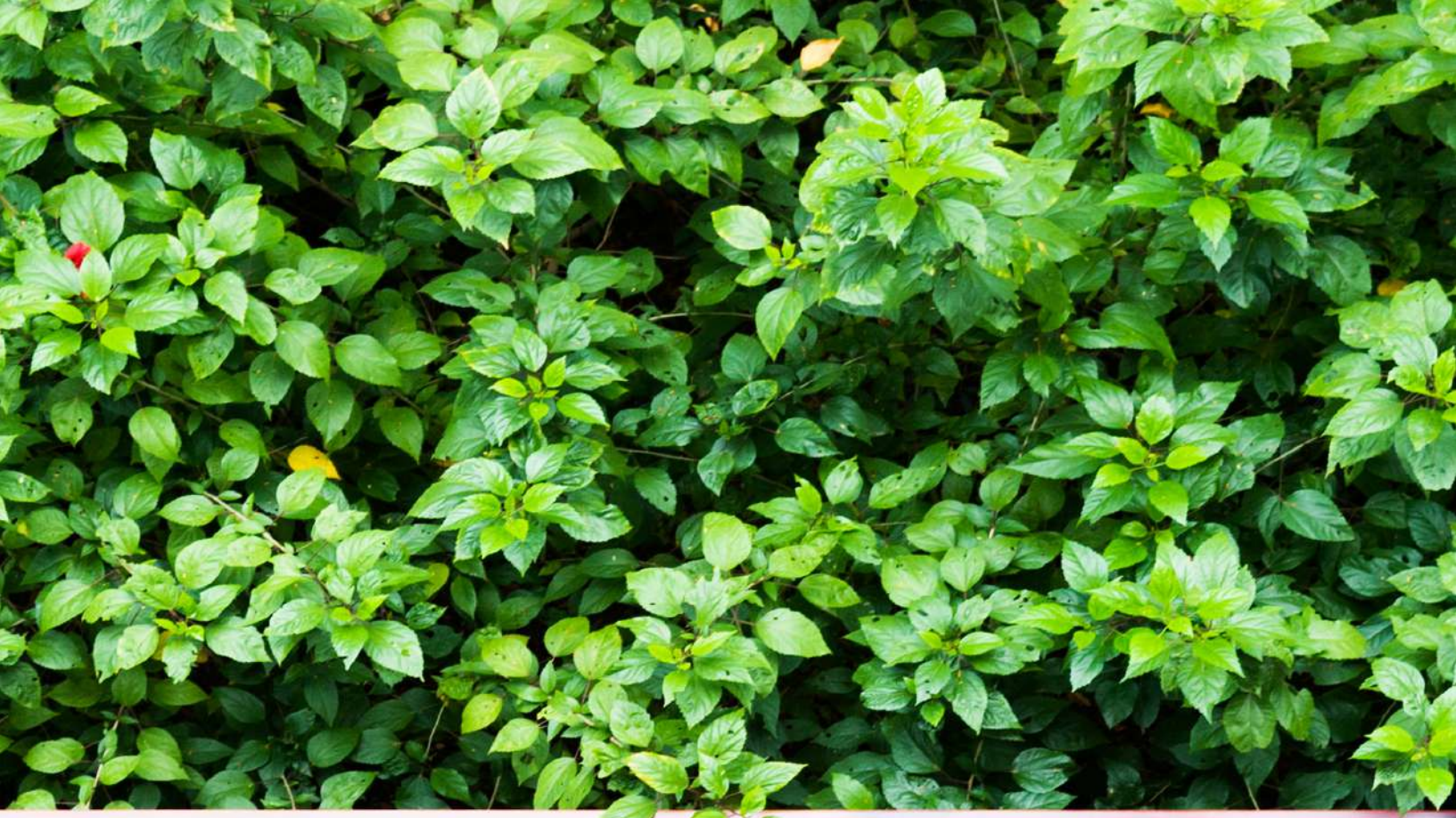
## What are the highlights of **iFly** clip?

REMOVE AND REPLACE ANY DECKING BOARD FROM ANYWHERE IN THE FLOOR OR WALL

— QUICK ACCESS FOR INSPECTION/CLEANING UNDER THE DECK

— CAN BE USED WITH ANY TYPE OF RAIL

— DOESN'T RUST





# EasyClick System

deck with just one click!



**EasyClick** is an innovative system which allows you to install **iDecking Revolution** boards simply using your feet. No need to use any nails, screws, drills, spacers or “obsolete” clips to install the boards on the understructures. The **EasyClick** system helps ensure a quick, simple and trouble free installation with the self alignment of board joints.

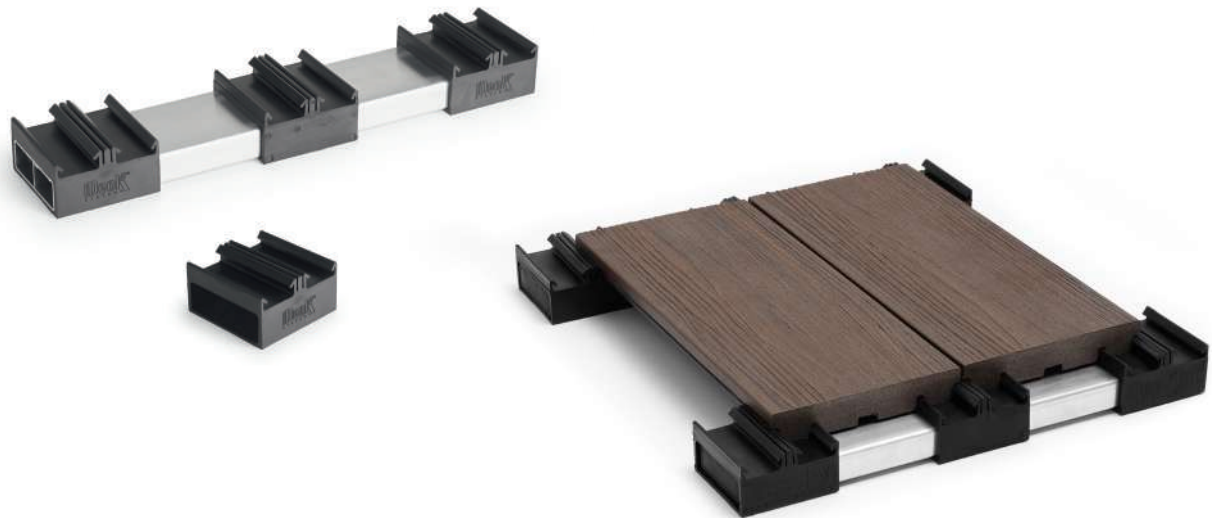


## How does **EasyClick** system work?

**EasyClick** is an aluminium substructure rail which comes with pre-installed and pre-spaced patented **EasyClick** nylon clips. When pressing the deck boards against the nylon clip, the boards are fixed and self aligned.



SCAN THE CODE TO  
WATCH THE VIDEO



What are the highlights of **EasyClick** system?

DECKING INSTALLATION UP TO 5 TIMES FASTER THAN TRADITIONAL DECK BUILDING

—

DRASTIC REDUCTION OF INSTALLATION ERRORS

—

“EFFORTLESS” INSTALLATION

—

DOESN'T CAUSE WATER STAGNATION UNDER THE DECK

—

INCREASED STRUCTURAL INTEGRITY AND STRENGTH

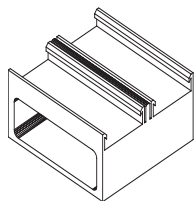
—

SELF ALIGNING SYSTEM

# Clips **EasyClick** system

## CLIP A

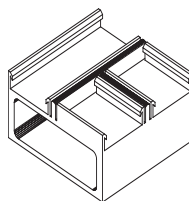
Master Clip integrated in the standard understructure. This clip joints the profiles in order to create linear design decking or wall claddings.



EXAMPLE

## CLIP B

This clip allows to install 2 vertical profiles and 1 horizontal profile, allowing to invert the design way.



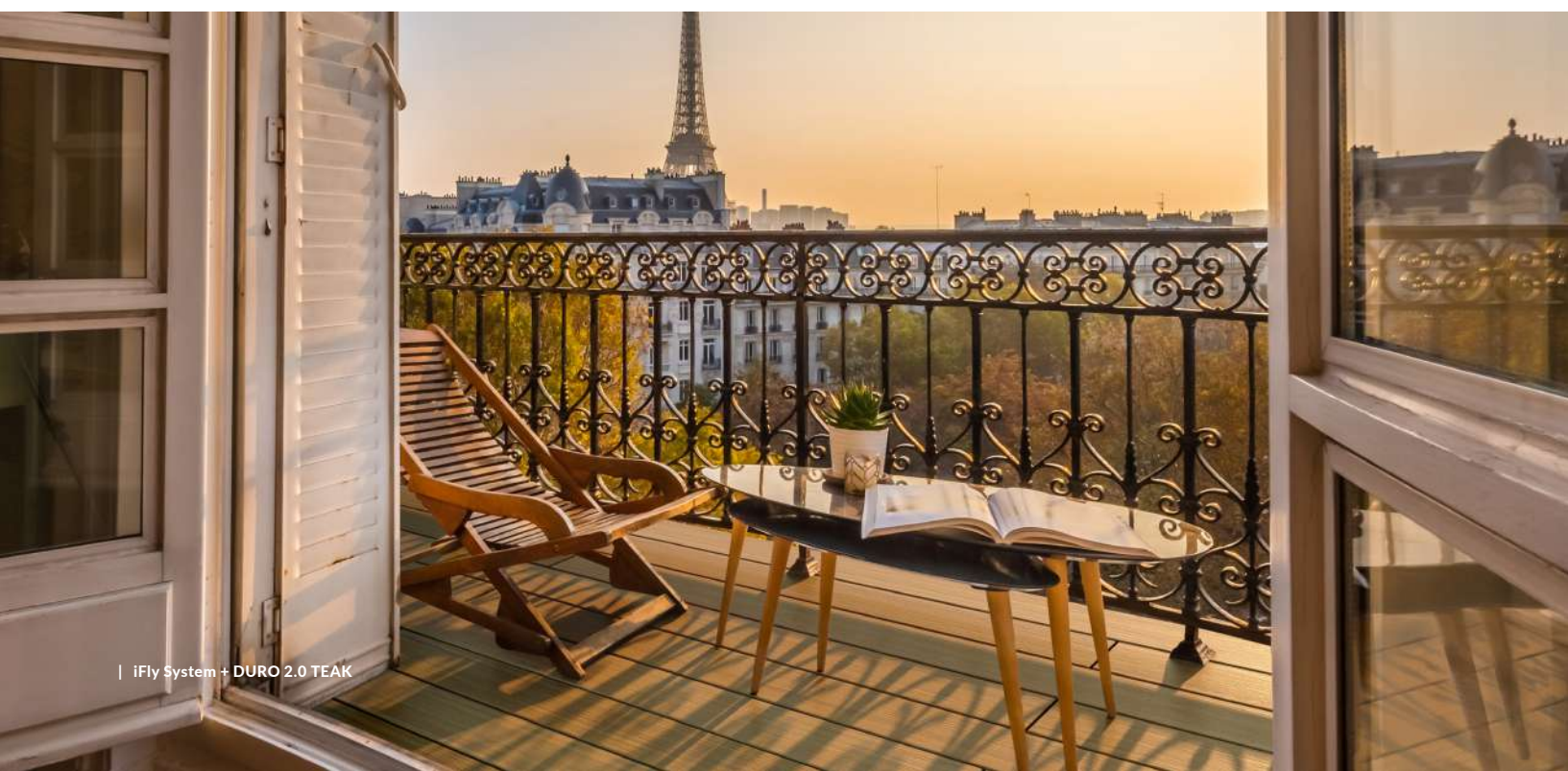
EXAMPLE

## B Clip modules explanation in 3 steps

**B-Clip** rails allow you to easily create modules. The modules can be pre-built and transported to site for an incredibly fast installation. Ideal for temporary/seasonal outdoor areas.



SCAN THE CODE TO  
WATCH THE VIDEO



# STEP Profile

## universal

The brand new DURO 2.0 Corner Step Profile arises from the need to be able to finish any flooring in an absolutely perfect way. It is an innovative and highly technical profile that is produced through a unique coextrusion process of two different materials.

The Duro 2.0 surface (in the colors currently in the range) is coextruded around the technical aluminum profile that can be clicked on the perimeter of each flooring thanks to the CLIP B substructure (both in the EasyClick system and in the EasyChange system).

The aluminum guarantees a perfect perimeter squaring and already has an underlying housing; seat for a possible further profile / finishing fascia board to go even deeper.

The profile can be cut at 45 degrees for a frame installation or simply left straight. Creating steps and frames in any decking flooring has never been easier.



### STEP PROFILE FRONT

Once installed with a simple click, the Step Duro 2.0 profile shows two visible faces in Duro 2.0, clean and homogeneous. The surface can be requested in any color in the range of Duro 2.0 decking by iDecking Revolution



### STEP PROFILE BACK

The internal part of the DURO 2.0 Step profile reveals the obsessive attention that iDecking usually pays to the technical part of each of its projects. The aluminum profile is extruded in such a way that it clicks easily and without screws into the type B substructures of both the EasyClick system and the EasyChange system. While the lower part already has the housing seat for a further finishing "extension" profile.



### 45° CUT

in this example the step Duro 2.0 corner profiles have been cut at 45 degrees and juxtaposed in such a way as to create a perfect frame. However, the 45-degree cut is not mandatory, and the profile can be managed ensuring maximum versatility



### CLIP B FOR EASYCHANGE

This photo reveals a big news in the iDecking Revolution house. In other words, the possibility of applying the angular step profile in Duro 2.0 also on the EasyChange system thanks to the new B EasyChange substructure. Before, the clickable profile could in fact only adapt to the EasyClick system, with the new patented EasyChange B substructure instead the profile becomes Universal in the world of iDecking Revolution systems!

# Fix expansion and contraction gaps with **iJack**



**iJack** was developed to overcome one of the common problems in composite decking - expansion & contraction.

The **iJack** is placed between the ends of the boards and locks them together.



SCAN THE CODE TO WATCH THE VIDEO

AVAILABLE ON **EASYCHANGE**  
AND **EASYCLICK DURO 2.0** BOARD

















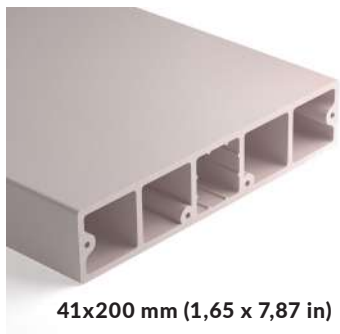
## iDecking blades



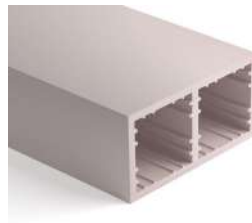
Working with some of the best architects in the world has led us to develop a unique product in our composite range.

**iDecking Revolution Blades** have been developed to satisfy requests for pergolas, fences, gates, blades, fins etc. The **Blades** are now available in 3 different measures and in the same finishes as our unique **DURO** and **DURO Excellence** Composite Material.

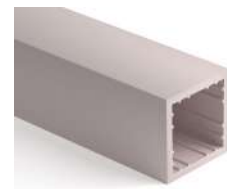
YOU DREAM WE BUILD IT!



41x200 mm (1,65 x 7,87 in)



40x80 mm (1,57 x 3,15 in)



40x40 mm (1,57 x 1,57 in)





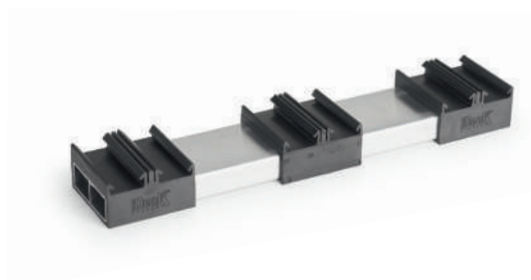






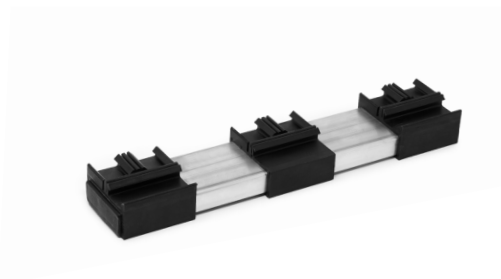


# SISTEMI: Dettagli Tecnici



## EASYCLICK SYSTEM RAIL - CLIP A

Rail for standard 140 mm decking/cladding board	Cod. CLSOT140AL
Size (1 piece)	70 x 26 x 2120 mm (2,75 x 1 x 83,46 in)
Weight	2,3 kg
Pallet	448 pcs
Pallet size	220 x 115 x 124 cm (7,21x3,77x4,06 ft)
Pallet weight	1.050 kg



## EASYCLICK SYSTEM RAIL - CLIP B

Rail for standard 140 mm wide board	Cod. CLSOT140ALB
Size (1 piece)	70 x 26 x 2120 mm (2,75 x 1 x 83,46 in)
Weight	2,3 kg



## EASYCHANGE SYSTEM RAIL

Rail for standard 140 mm wide board	Cod. CHSOT140ALL
Size (1 piece)	50 x 30 x 2170 mm (1,96 x 1,18 x 83,46 in)
Weight	1,2 kg
Pallet	512 pcs
Pallet size	220 x 115 x 124 cm (7,21x3,77x4,06 ft)
Pallet weight	1.140 kg



## EASYCHANGE SYSTEM RAIL CLIP B

Rail for standard 140 mm wide board	Cod. CHSOT140ALB
Size (1 piece)	70 x 30 x 2170 mm (2,75 x 1,18 x 83,46 in)
Weight	2 kg



## IFLY SYSTEM RAIL 14MM HEIGHT

Rail for standard 140 mm wide board	Cod. IFSOT140AL
Size (1 piece)	46 x 14 x 2170 mm (1,81 x 0,55 x 83,46 in)
Weight	1,5 kg

## IFLY SYSTEM RAIL 20MM HEIGHT

Rail for standard 140 mm wide board	Cod. IFSOT20AL
Size (1 piece)	46 x 20 x 2170 mm (1,81 x 0,78 x 83,46 in)
Weight	1,8 kg



## EASYCHANGE / IFLY KEY

Code	CHKEY
Size (1 piece)	85 x 10 x 80 mm (3,34x0,39x3,1 in)
Package	scatola
Pieces in a box	10
Box size	12 x 9 x 9 mm (4,72,x3,54x3,54 in)

# Dettagli Tecnici Clips e Accessori



## EASYCHANGE CLIP B START/END - PER STEP PROFILE

Cod.	CHSOTCLIPBT
------	-------------



## IJACK

Cod.	IJACKSK
Package	plastic bag
Pcs per bag	50



## SOTTOSTRUTTURA PRIMARIA AD INCASTRO SU PIEDINO ALTEZZA 14MM

Used for floating decks	Cod. IFPROFAL14218
Size (1 piece)	60 x 14 x 2170 mm (2,36 x 0,55 x 83,46 in)
Weight	1,5 kg



## SOTTOSTRUTTURA PRIMARIA AD INCASTRO SU PIEDINO ALTEZZA 20MM

Used for floating decks	Cod. IFPROFAL20218
Size (1 piece)	60 x 20 x 2170 mm (2,36 x 0,78 x 83,46 in)
Weight	1,8 kg

## SOTTOSTRUTTURA PRIMARIA PER SOGLIE 6,8MM H

Used for floating decks	Cod. IFPROFAL68218
Size (1 piece)	46 x 6,8 x 2170 mm (1,81 x 0,26 x 83,46 in)
Weight	0,7 kg



## IFLY DECKING CLIP

Traditional decking clip with EasyChange function	Code IFLY50
Material	Fiberglass reinforced technopolymer
Package	bag
Pieces per bag	50
Bags per box	18
Box size and weight	30 x 40 x 20 cm - 11.7 Kg (11,8x15,74x7,87 in)
Boxes per pallet	80
Pallet size and weight	120 x 80 x 220 h. - 936 Kg (3,93x2,62x7,21 ft)
Complimentary tools	EasyChange Key (CHKEY) - Start/End Clip



## EASYCHANGE / IFLY START/END CLIP

Code	IFCLIPPF50
Look	Nylon Clip
Package	Plastic bag
Pieces per bag	50

# Boards & Profiles Technical Datas



## DURO 2.0

Decking board composition	HDPE - Bamboo Dust - Rice Husks - Additives
Systems	EasyClick / EasyChange
Surface	Wood Grain Emboss
Colours	Helmet - Teak - Terra - Burma - Denim
Size (1 piece)	140 x 22 x 2180 mm (5,5x0,86 in - 7,15 ft)
Weight (1 piece)	7.2 kg
Pallet	114 pcs (35 sqm / 667 ft2 +/-)
Pallet size	84 x 220 x 58h cm (2,7x7,2x1,9 ft)
Pallet weight	840 kg +/-

## DA SAPERE

iJack Hole	Yes
pieces needed for 1 squared meter	3.18
linear meters for 1 squared meter	6.93 meters



## ETHERNO ( 100% BAMBOO + IDECKING SISTEMI)

Decking board composition	100% Bamboo
Systems	EasyClick / EasyChange
Surface	Flat
Colours	Chocolate
Size (1 piece)	137 x 20 x 1870 mm (5,39x0,78 in - 6,13 ft)
Weight (1 piece)	7.5 kg
Pallet	196 pcs
Pallet size	190 x 100 x 72 cm (6,23x3,28x2,36 ft)
Pallet weight	1490 kg +/-

## DA SAPERE

Etherno pieces needed for 1 squared meter	3.5
Etherno linear meters for 1 squared meter	6.40 meters

# Framing Profiles Technical Datas



## STEP PROFILE ALU + DURO 2.0

Composition	Aluminum + Duro 2.0
Systems	EasyClick / EasyChange
Surface	Duro 2.0
Colours	Whole DURO 2.0 COLOUR RANGE
Size (1 piece)	56 x 51 x 2180 mm (2,20x2,00x85,82 in)
Other Materials Availability	HARD STEP PROFILE IN ETHERNO BAMBOO



## DURO 2.0 FASCIA BOARD

Composition	HDPE - Bamboo Dust - Rice Husks - Additives
Systems	Universal
Surface	Wood Grain Emboss
Colours	Helmet - Teak - Terra - Burma - Denim
Size (1 piece)	150 x 12 x 2180 mm (5,90x0,47x85,82 in)
Package	bulk pieces to add to the decking pallets
Weight	5 Kg



## ETHERNO BAMBOO 140 X 18 X 1870 MM

Composition	100% Bamboo
Systems	Universal
Surface	Flat
Colours	Chocolate
Size (1 piece)	140 x 20 x 1870 mm (5,5x0,59 in - 6,13 ft)
Package	bulk pieces to add to the decking pallets
Weight	7 Kg